

Victorian Lace TODAY

Corrections & Clarifications

First Printing 2006

Page 33 Key

Shaded square needs to be K on WS

Page 37 Chart B Row 7

Second square from left needs to be shaded.

Page 72 Key

The square for the S2KP2 should be shaded.

Page 84 Chart A, Diamond Border

Numbering on left side of chart:

Row numbers 18 and 16 need to be reversed. Not the instructions, just the numbers.

Page 88 Chart A, Wide and handsome border

Row 1 Double YO's should be in red.

Page 92 Chart A

Center 2 columns of faggoting and column of faggoting directly to the right of diamond pattern should have:

NO yo's on even-numbered rows.

Chart in K77 page 76 is correct.

Page 114 Border

Instruction #4 needs to read...ending 8 rows before...(not stitches).

Page 177

Needle chart should be as follows:

US	mm	UK
0	2	14
1	2.25	-
2	2.75	12
3	3.25	10
4	3.5	-
5	3.75	9
6	4	8
7	4.5	7
8	5	6
9	5.5	5
10	6	4
10½	6.5	3
11	8	0
13	9	00
15	10	000

Project index

CAPES, CURVES AND FICHUS

A curved shawl	70
Cap shawl	26
Harebell Fichu	116
Lady's circular cape	112
Opera fichu	120
Spider's-web shawls	42

RECTANGLE SHAWLS

Diamonds and triangles	148
Knitted veil	66
Large rectangle in leaf and trellis	52
Large rectangle in spider net	22
Maltese shawl	160
Melon shawl	144
* Miss Lambert's Shetland pattern	48
Myrtle leaf shawl	140
* Rectangle with diamond pattern	18
* Scarf or shawl with center pattern	14
Stripes and torchon lace	156
Two sampler shawls	56
Victoria shawl	152

SCARVES

A wide and handsome border	88
Alpine knit scarf	34
Clarence border	82
Double diamond border	104
Double dolphin lace	106
Edging #20	84
Edging #21, insertion #25	100
French trellis border	98
Holly berry	96
Open and solid diamond lace	90
* Striped border	80
Victorian ruby	92

TRIANGLES

Half-square in Trinity Stitch	124
Handsome triangle	30
Shoulder shawl in cherry leaf pattern	132
* Shoulder shawl in Syrian pattern	128
3-cornered shawl in clover pattern	136
Wide triangle	06
* Recommended as a first lace project.	

Second Printing 2006

Page 8

Yardage required is 465 yds.

Page 36

Double moss st trim should read as follows:

ROW 1 *K2 MC, p2 CC, repeat from *,

ROW 2 *K2 CC, p2 MC, repeat from *,

ROW 3 Change CC: *P2 CC, k2 MC, repeat from *,

ROW 4 *P MC, k2 CC, repeat from *.

Page 37 Chart B Row 7

Second square from left needs to be shaded. **Page 45 Chart B,**

Insertion, Row 115

The 16th stitch from the right should be a K2tog instead of a knit st.

Page 44 Full Hexagon shawl

Next round, stitch count per section should be 118

Border After cast on, knit 1 row.

Page 58 Pink Sampler Border

6th line needs to read:[Work 6 single Joins—1 repeat of Chart J]....

Page 77 Wide -bordered Scarves

Note 5: Page reference needs to be page 172 (not 174).

Page 90 Blue scarf

Written instructions are for a 4-repeat scarf. Photo is a 3-repeat scarf. The measurements and yarn yardage called for are for the 3-repeat scarf. The 3-repeat scarf instructions are as follows:

After the first 3-repeat border is knit, for the center of scarf you will need a total of 50 stitches. Next row you will knit 5, pm, work Chart B over 40 sts, pm, knit 5. To establish garter stitch borders and center insertion you will knit 5, work Chart B over 40 sts, knit 5. Work Chart B Rows 1-32 six times, then Rows 1-16 once. Knit 1 row, do not turn work. When you are ready to begin the second border you will have 82 sts on the needle.

If you wish to do a 4-repeat scarf as written you will need approximately 525 yards of yarn. The measurement will add approximately 3.34 inches to the width.

Page 92 Chart A, Row 29

Second stitch from left edge should be a knit stitch.

Page 96

Chart A, Fir cone lace

The red icon in row 4 needs to be moved down to row 3

Chart A. All even rows, last stitch should be a black icon for first and second border instructions. The red icon needs to be eliminated from the chart and the key.

Row 3 of Chart A, first stitch should be a k2tog.

Row 4 of Chart A should be as follows: P2, k1, (p3, k1) 7x, ending in a border stitch icon.

Center of Scarf, last row of instruction...then Rows 1–44 needs to be changed to 1–45.

Page 127

Chart B

Row 5, 7th stitch from the right needs to have the icon it has and be shaded grey.

Chart C, Wide border corner

Row 29 Second square from the right needs to be blank.

Row 37, 3rd square worked from right edge should be: blank grey.

Page 137

Sleeves

Edging

Third sentence should read as follows:

Work 5 rows St st, beginning and ending with k row.

Page 142 Note 3 needs to read as follows: Keep tension tight when working yo's and the k2tog at the top of the leaves in rows 7 & 13.

Key needs a shaded 'v' along with the non-shaded 'v'.

Row 13 Chart A, Myrtle leaf pattern

First k2tog on right edge needs to be: red.

A k2tog (black) needs to be added to same row 5th square from left edge

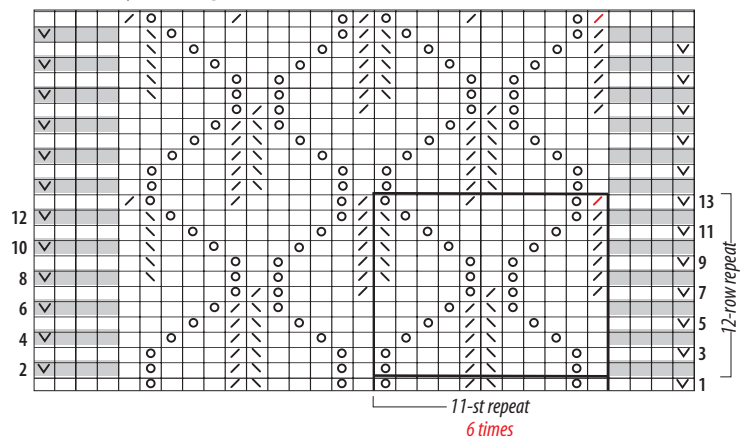
Same with last row in chart.

Key needs to have the red k2tog added with the following verbiage:

Knit on 1st repeat; k2tog on all other repeats.

See corrected chart below.

Chart A, Myrtle leaf pattern



Page 146

Melon Stitch diagrams.

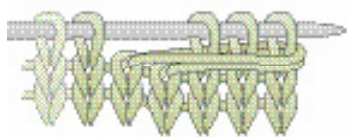
MELON STITCH



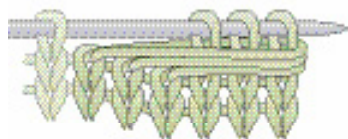
Worked over 6 stitches:



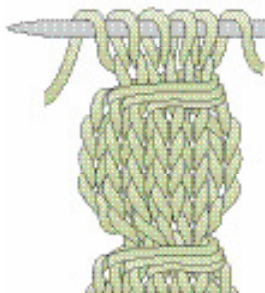
lift 4th...



... 5th...



... and 6th stitches over first 3 stitches and off needle;...



... yo, k1, yo, k2, yo.

Repeat every 6th row.

Page 179 Ruffled border

Last sentence should not be: Bind off.

Should read: Picot Bind off—co 2 sts, then bo 5 sts (ie. Bo the 2 co sts, then bo 3 live sts).

Page 184 Planning a shawl

First paragraph, last line: Page reference needs to be pages 172 & 173 (not 174 & 175).

Page 154

☑ SSK on RS, SSP on WS

Page 174

Yarn weight #2, second yarn listed, should be: (silk; 1 oz; 265 yds)